

## District Profile - Trichy

### TIRUCHIRAPPALLI DISTRICT

Tiruchirappalli District is located centrally in Tamilnadi and surrounded by Namakkal Salem, Karur, Ariyalur, Pudukkottai, Thanjavur and Dindigul Districts. Being the central District of the state the district has so many advantages. Basically an agrarian district with industrial growth supported by the public sector companies like BHEL, HAPP, OFT and Railway workshop. The district is pioneer in fabrication industry and frontrunner in the fabrication of windmill towers in the country.

### GEOGRAPHICAL POSITION

North Latitude - Between 10 to 11 - 30'  
East Longitude - Between 77 - 45' to 78 - 50'

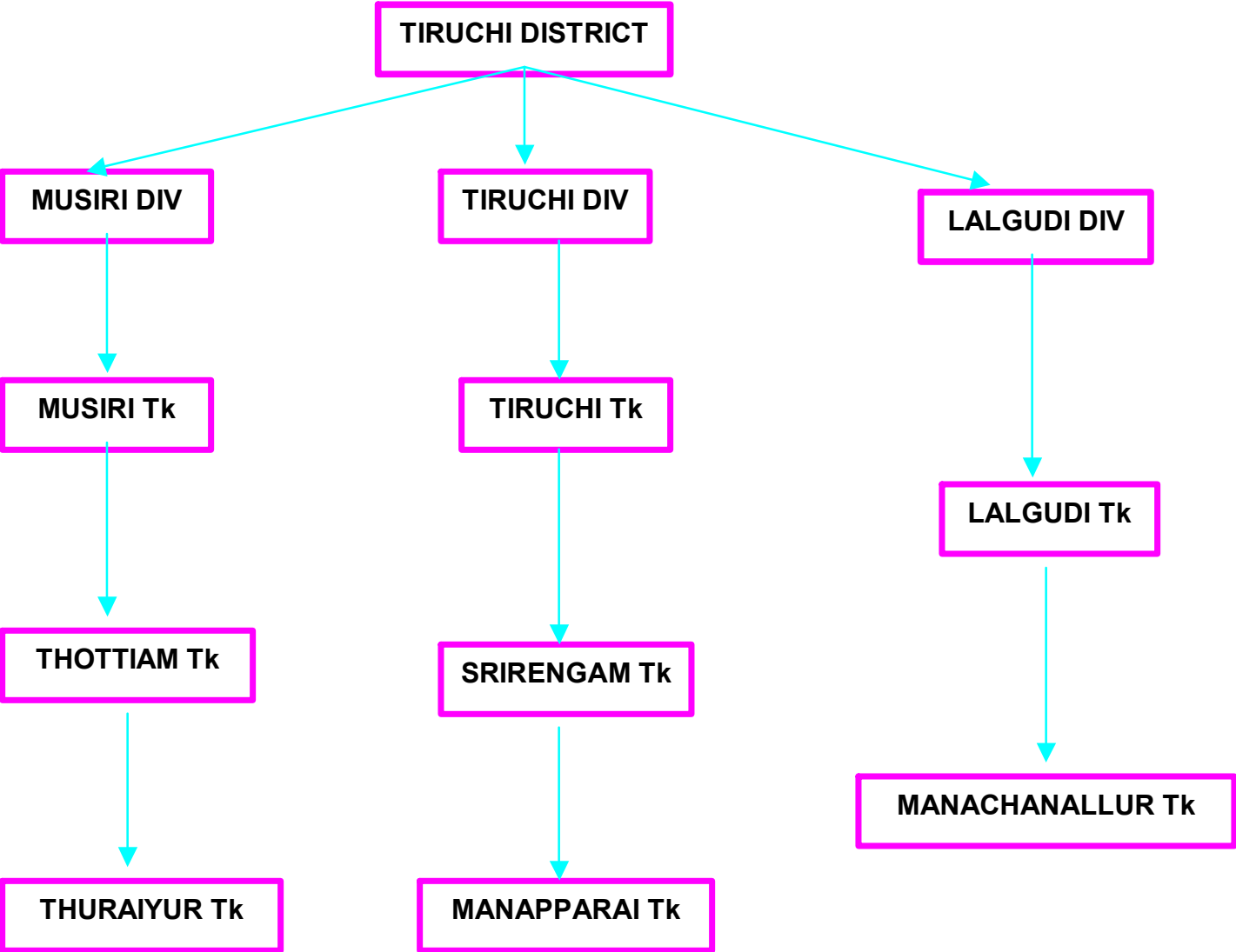
### AREA AND POPULATION

Area (Sq. Km.)	4,403.83
Population(2001 Census)	24,18,366
Male Population	12,08,534
Female Population	12,09,832
Rural Population	12,79,204
Urban Population	11,39,162
Density (Sq. Km.)	549
Literates	16,73,478

### WORKERS

Total Workers	10.64.521
Male Workers	6.87.814
Female Workers	3.76.707
Rural Workers	6.71.320
Urban Workers	3.93.201
Cultivators	2.03.874
Agricultural Laborers	2.45.875
Household Industrv	36.676
Other Workers	4.41.363
Marginal Workers	1.36.733

**REVENUE ADMINISTRATION**



## DEVELOPMENT WING

**Total No. of Blocks – 14**

### Backward Blocks as announced in the MSMI Policy

Lalgudi	Manachanallur	Manapparai
Marungapuri	Musiri	Thottiam
Thuraiyur	Pullambadi	Uppiliyapuram
Vaiyampatti	Thathaiangarpettai	

### Other Blocks

Andhanallur	Manikandam	Thiruverumbur
-------------	------------	---------------

## RAINFALL & TEMPERATURE

NORMAL RAINFALL (mm)		ACTUAL RAINFALL (mm)	
North east monsoon	South west Monsoon	North east monsoon	South west Monsoon
356.1	270.3	364.9	357.7
Maximum Temperature 40.2 C			
Minimum Temperature 15.0 C			

## AGRICULTURE

Total cultivated area (Ha)	185985
Net area sown (Ha)	171002
Area sown more than once (Ha)	14983

## AGRO PRODUCES

Crop	Area (Ha) '000'	Production '000' MT
Rice	62.178	200.793
Millets & Cereals	48.229	47.264
Pulses	8.884	4.104
Sugarcane	4.534	43.073
Groundnut	15.456	30.246
Gingili	0.657	0.473
Cotton (BL)	9.808	2.812
Banana	11.060	3234

<b>ANIMAL HUSBANDRY</b>	
<b>Livestock and poultry population</b>	
Cattle	3,54,301
Buffaloes	4,03,878
Sheep	2,57,271
Goat	3,66,753
Poultry	9,40,619
<b>DAIRY DEVELOPMENT</b>	
Dairies	1
Milk Chilling Plants	2
No. Of Milk Co. op. Society	217
<b>Milk Production (Lakh Litres)</b>	
Flush Season	2,97,117
Lean Season	2,47,934

## **ELECTRICITY**

<b>Generation of Electricity</b>	
Hydro	NIL
Wind Mill Generation	NIL
Thermal	NIL
Power Purchased	9.819mu
Gas Turbine	NIL
<b>Consumption of Electricity (in m.u.) Kwh.</b>	
Agriculture	116.600
Industry	276.641
Commercial	137.674
Domestic & Water works	255.665
Public Lighting	99.635

## List of Sub-Stations – LT

Name of the Sub Station	Capacity (KVA)	Name of the Sub Station	Capacity (KVA)
Mannarpuram	33/11	Tiruchi	110/33/11
K. Sathanur	110/11	Thenur	33/11
Thuvakudi	110/11	Kambarasampettai	110/11
Ambikapuram	110/11	Vengaimandalam	33/11
Anthanallur	110/33/11	Samayapuram	110/33/11
Court Complex	33/11	Manapparai	110/22/11
Thiruverumbur	110/11	Nadupatti	33/11
Pettavaithalai	33/11	Mettupatti	33/11
Ammapatti	110/11	Thuvarankurichi	33/11

## List of High Tension Stations

Name of the Station	Capacity (KVA)	No. of Transformers
Thachankurichi	230	1
Kallakudi	110/22	2
Thathaiyangarpettai	110/33 & 110/22	2 & 1
Thuraiyur	33/11, 110/22, 110/11	2, 1, 1
Musiri	110/11	1
Poovalur	110/11	1
Koppampatti	110/11, 110/33	2, 1
Thottiam	33/11	2
Melakothampatti	33/11	2
T. Murungapatti	33/11	1
Kolakudi	33/11	1
T. Renganathapuram	33/11	1

## TRANSPORT – ROAD

National Highways	202.600
State Highways	210.235
Corporation and Municipal Roads	986.462
Panchayat Roads	2795.32
Township Roads	884.64

## TRANSPORT – RAILWAYS

Route Length (Km.)	
Broad Gauge	64.92
Meter Gauge	20.79
Track Length (Km.)	
Broad Gauge	115.61
Meter Gauge	44.98
Number of Railway Stations	14
No. of Trains passing through	114/Day
AIRPORT	
Tiruchi is having an international airport with 14 services per day.	

## MINERAL WEALTH

Name of the Mineral	Quantity(Tonne)	Value(Rs.in'000')
Lime Stone	835594	334.24
Fire Clay	840	0.14
Soap Stone	160	0.04
Gypsum	2600	0.58
Quartz	1920	1.00
Rough Stone	4020 L.L	5.63
Sand	120490 LL	156.64
Brick Earth	70 LL	0.04
Colour Granite	431.520 Cu.Mts	6.47
Black Granite	103.408 Cu.Mts.	2.59

## BANKS

IOB is the LEAD BANK with 47 branches.

	No. of Urban Branches	No. of Semi Urban Branches	No. of Rural Branches	Total
Public Sector Banks	83	24	59	166
Private Sector Banks	25	4	13	42
District Central Coop. Bank	17	7	7	31
Tiruchi City Coop. Bank	5	0	0	5
TNSC Agri. & RD Bank Ltd.	1	4	0	5
TIIC	1			1
<b>Total</b>	<b>132</b>	<b>39</b>	<b>79</b>	<b>250</b>

## ACP & PERFORMANCE

2008 – 2009 PLAN			
Sector	Target (Rs. Crores)	Percentage of Total Target	
Agriculture	771.63	65.64	
Non Farm Sector	133.24	11.33	
Other Priority Sector	270.68	23.03	
<b>Total</b>	<b>1175.55</b>	<b>100</b>	
2007 – 2008 PLAN & PERFORMANCE			
Sector	Target (Rs. Crores)	Achievement	Percentage
Agriculture	799.94	790.66	99
Non Farm Sector	96.87	129.09	133
Other Priority Sector	234.20	387.33	165
<b>Total</b>	<b>1131.01</b>	<b>1307.08</b>	<b>115</b>

## PRESENT INDUSTRIAL SCENARIO

### GROUP WISE ENTERPRISES ISSUED SSI REGN / EM NUMBER AS ON 31.03.08

GROUP DESCRIPTION	Nos.
Mfg. of Food Products	1101
Mfg. of Tapioca Products	6
Mfg. of Textiles	42
Mfg. of Wearing Apparels, Dressing & Dyeing	4509
Tanning & Dressing of Leather & Products	97
Mfg. of Wood, , Straw articles	251
Mfg. of Paper & Paper products	27
Publishing, Printing & Reproduction of record media	293
Mfg. Coke, Refined products & Nuclear Fuel	4
Mfg. of Chemicals & Chemical Products	151
Mfg. of Rubber & Plastic products	295
Mfg. of Non – Mineral products	172
Mfg. of Basic Metals	43
Mfg. of Fabricated Metal products except Machinery	1474

Mfg. of Machinery & Equipments n.e.c.	55
Mfg. of Office Accounting & Computing Machinery	1
Mfg. of Electrical Machinery & Apparatus	62
Mfg. of Radio, TV, Communication Equipment	13
Mfg. of Medical, Precision, Optical Instruments,	6
Mfg. Motor Vehicles, Trailers and Semi Trailers	7
Mfg. of Other Transport Equipments	9
Mfg. of Furniture	480
Recycling	7
Electricity, Steam, Gas & Hot water supply	1
Collection, Purification & Distillation of Water	2
Maintenance & Repair of Motor Vehicles	449
Maintenance & Repair of Personal Household	750
Land Transport	0
Supporting and Auxiliary activities	9
Post and Telecommunications	42

Renting of Transport Equipment other Machinery	2
Computer and related activities	194
Other Business activities	107
Health and Social work	5
Recreational, Cultural & Sports	2
Other Service activities	81
<b>TOTAL</b>	<b>10759</b>

## ANCILLARY INDUSTRIES

The boom in the growth of the BHEL in Tiruchi in turn paves the way for the growth of ancillary industries in the fabrication sector. The major industries giving load to the ancillary units are:

### **BHARAT HEAVY ELECTRICALS LIMITED:**

Major Activity : Boilers & Accessories.  
 Ancillary Activity : Fabrication, CNC Machining  
 No. of Ancillary Units : 350  
 Employment : 18000

### **HEAVY ALLOY PENETRATING PLANT:**

Major Activity : Manufacturing Tanks & Armoured Vessels  
 Ancillary Activity : Fabrication & other machining work  
 No. of Ancillary Units : 10  
 Employment : 500

### **ORDINANCE FACTORY:**

Major Activity : Manufacturing Gun and Gun Parts.  
 Ancillary Activity : Pressed & precision turned components  
 No. of Ancillary units : 10  
 Employment : 500

### **RAILWAY WORKSHOP:**

Major Activity : Repairing & Servicing of Railway coaches  
 Ancillary Activity : Reclamation of crank shaft, machining .  
 No. of Ancillary units : 5  
 Employment : 200

### **CETHAR VESSELS:**

Major Activity : Special Structural Fabrication.  
 Ancillary Activity : Fabrication and Welding  
 No. of Ancillary units : 30  
 Employment : 1500

**HARIHAR ALLOYS CASTINGS PVT. LTD.:**

Major Activity	: Manufacturing Alloy Castings.
Ancillary Activity	: Fettling and Machining work
No.of Ancillary units	: 5
Employment	: 200

**G.B.ENGINEERING PVT. LTD:**

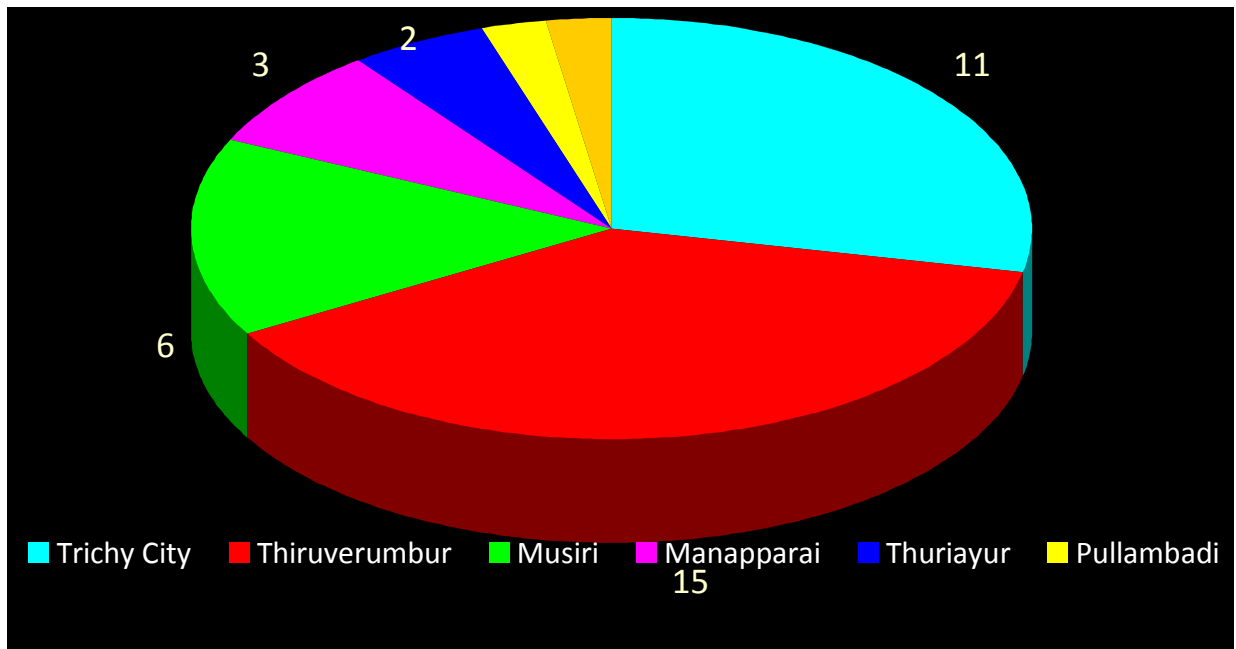
Major Activity	: Fabrication
Ancillary Activity	: Fabrication and Welding
No.of Ancillary units	: 10
Employment	: 500

**MAJOR INDUSTRIES**

Name of the Unit	Activity	Emp.
<b>TRICHY CORPORATION</b>		
Tiruchy Distilleries and Chemicals Limited	Distilleries	250
Thanthi Press	Newspaper	50
Murasu Press	Newspaper	50
New Standard Press	Newspaper	45
Dinakaran	Newspaper	22
Malar Publications (P) Ltd.	Newspaper	12
Tiruchy Steel Rolling Mills Ltd.	Alloy Steel	750
Titanium Equipments & Anode Mfg. Co.	Steel Fabrication	100
Sea Horse Industries Limited	Energy Metre	500
Bharat Petroleum Corporation Ltd.	Petrol Pumping	22
Indian Oil Corporation Ltd.	Petrol Pumping	50
<b>THURAIYUR BLOCK</b>		
Vijay Dairy and Farm Products (P) Ltd.	Milk processing	47
Sri Vignesh Pipe Industries (P) Ltd.	PVC Pipes	50
<b>MANAPPARAI BLOCK</b>		
Sri Meenakshi Mills	Spinning Yarn	500
Maris Spinners Limited Unit II	Spinning Yarn	500
Radha Textiles (P) Ltd.	Spinning Yarn	27
<b>MUSIRI BLOCK</b>		
Cethar Food Oil Ltd.	Rice Bran Oil	100
Sri Lakshmipriya Oil Refineries (P) Ltd.	Rice Bran Oil	20
Vijay Cements	Cement	50
Ruby Chlorates (P) Ltd.	Chlorate	50
A.K.M.N.Cylinders (P) Ltd.	Gas Cylinder	85
Cethar Vessels Ltd.	Steel Fabrication	24
<b>PULLAMBADI BLOCK</b>		
Dalmia cements (Bharath) Ltd.	Cement	1000

<b>LALGUDI BLOCK</b>		
Kothari Sugar (P) Ltd.	Sugar & spirit	250
<b>THIRUVERMBUR BLOCK</b>		
GB Engineering Enterprises (P) Ltd.	Steel Fabrication	100
Combined Cycle Demonstration Plant	Power plant	100
Welding Research Institute	R & D	250
Aravind Steels	M.S. Rods	50
Jupiter Flour Mill,	Flour products	150
Jothi Malleables (P) Ltd.	Iron castings	100
Central workshop, Southern Railway	Loco Engine	10000
Tuticorin Alkali Chemicals &Fertilizers Ltd.	Pesticides	50
Selathar Tanning Industry	Tannery	250
Seamless Steel Tube Plant	Fabrication	2000
Ordinance Factory	Weapons	10000
Heavy Alloy Penetrator Project	Weapons	10000
Tiruchirappalli Coop.Milk Producers Union	Milk Chilling	250
Sangam Organics and Chemicals	Detergent	250
High Pressure Boiler Plant	Boilers	10000

### **BLOCK WISE DISTRIBUTION OF MAJOR INDUSTRIES**



## **THRUST SECTOR ACTIVITIES IDENTIFIED**

- Readymade Garments
- CNC Machining
- Advanced Welding technologies
- Food Processing
- Fabrication works in Energy sector
- Software Development
- BPO

## **INDUSTRIAL CLUSTERS**

### **TIRUCHI ENGINEERING AND TECHNOLOGY CLUSTER:**

Location : Thiruverumbur, Thuvakudi, Ariyamangalam  
Activity : Welding, Fabrication & Machining  
Size : About 300 Industrial Units  
Major Customers : BHEL

The units execute assemblies, sub-assemblies and components of Thermal Boiler of 60 MW to 500 MW capacities.

### **SYNTHETIC GEM CUTTING CLUSTER:**

Synthetic Gem cutting and polishing work is being carried out by nearly 35,000 people in and around Tiruchi and 500 units are running as on date. For them already one Tamilnadu Synthetic Gem Marketing Service Industrial Cooperative Society is functioning with members of 315.

### **KORAI MAT WEAVING:**

Korai Mat Industry has been developed in the villages Musiri, Vellore, Ayyampalayam, Vadugapatti in Musiri Block. About 200 mechanized korai mat units are functioning in the above area. The basic raw material for the activity is korai grass which is cultivated in the area and is available abundantly.

### **READYMADE GARMENTS:**

At present, this industry has been developed by the minority community in the village Puthanatham situated 55 kms. away from Tiruchirappalli town, in Manapparai block and the product is famous throughout Tamilnadu. There are about 100 units engaged in the manufacture of Readymade Garments such as Midi, Churidhar, Frock, Shirts, Babasuit etc. in different sizes for all ages.

## **EXPORT POTENTIAL**

The activities having export potential are

- Wind Mill Towers
- Precision machined components
- Readymade Garments
- Food Products
- Boiler components & Accessories
- Software

## **POTENTIAL NFS ACTIVITIES**

### **RAW MATERIAL BASED:**

Banana Fibre Extraction, Rice Mill, Flour Mill, Oil Mill, Food Products, Pacakaged Drinking Water, Herbal Products, Cattle Feed.

### **DEMAND BASED:**

Fabrication, Machining, Software Development, BPO Services, Bakery Products, Construction Materials.

### **SKILL BASED:**

Fabrication, Machining, Software Development.

### **EXPORT ORIENTED:**

Readymade Garments, Food Products, Software, Boiler Components & Accessories.

### **RURAL ARTISAN BASED:**

Coir & Value Added Products, Banana Fibre Products, Korai Matt, Arecanut Leaf Plate & Handicraft Items.

BLOCK	ACTIVITIES
THIRUVERUMBUR	Fabrication, General Engineering, Electro plating, Plastic Items, Rubber goods, Detergent soap, Corrugated boxes, Electrical items, Rolling Shutter, Non ferrous Castings, Industrial Gloves.
MANIKANDAM	Simple Chemicals, Electro plating, Naphthalene balls, Optical lens grinding, Precast RCC Window and Door Frames, General Engineering Work shop, M.S. Grills, Steel Furniture.
ANDHANALLUR	Wax Candles, Bread & bakery items, Chamber Bricks, Wooden Furniture, Printing Industry, Modern Rice Mill, Oil Mill.
LALGUDI	Modern Rice Mill, Oil Mill, Herbal Medicines, Packaged Drinking water, Trailers, Steel Furniture.
PULLAMBADI	Modern Rice Mill, PVC Pipes, RCC Spun Pipes, Sugarcane gur.
MANACHANALLUR	Modern Rice Mill, Banana Products, Bleaching Powder, Cattle Feed, Gate & Grills, Trailers.
MUSIRI	Banana products - Banana fibre, General Engineering Workshop with CNC Machine, Zinc Sulphate, Blue Metal jelly crushing, Saw Mill, Coir Unit.
THATHAIGARPETTAI	Rice Mill, Flour Mill, Oil Extraction, Mfg. Masala Powder, Herbal Medicines, Pickle Jam, Hollow Blocks.
THOTTIAM	Banana products, Banana Fibre, Coconut Fibre, Packaged Drinking water, Coconut shell powder
THURAIYUR	Extraction of Edible Oil, PVC Pipe, Neem Oil, M.S.Gate, Grill, Rolling Shutters.
UPPILYAPURAM	Sago, Cashew Processing, Bio Diesel, Modern rice mill, Oil Mill, Masala powder.
MANAPPARAI	General Engineering Works, Tomato Jam & Sauce, Savourites, Puffed rice and confectionery, Readymade Garments.
VAIYAMPATTI	Bamboo products, Aloe vera gel, Tomato sauce and jam, Vermi Compost, Milk products.
MARUNGAPURI	Agro fuel from Waste wood, Saw Mill, Mango Pulp, Coconut fibre, Milk products.

## INDUSTRIAL ESTATES

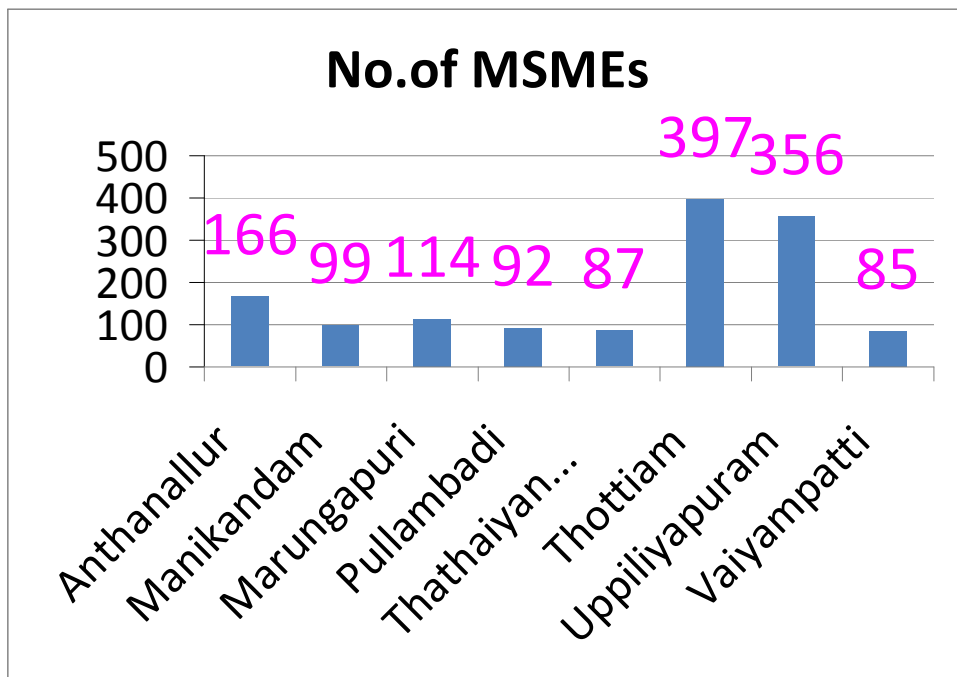
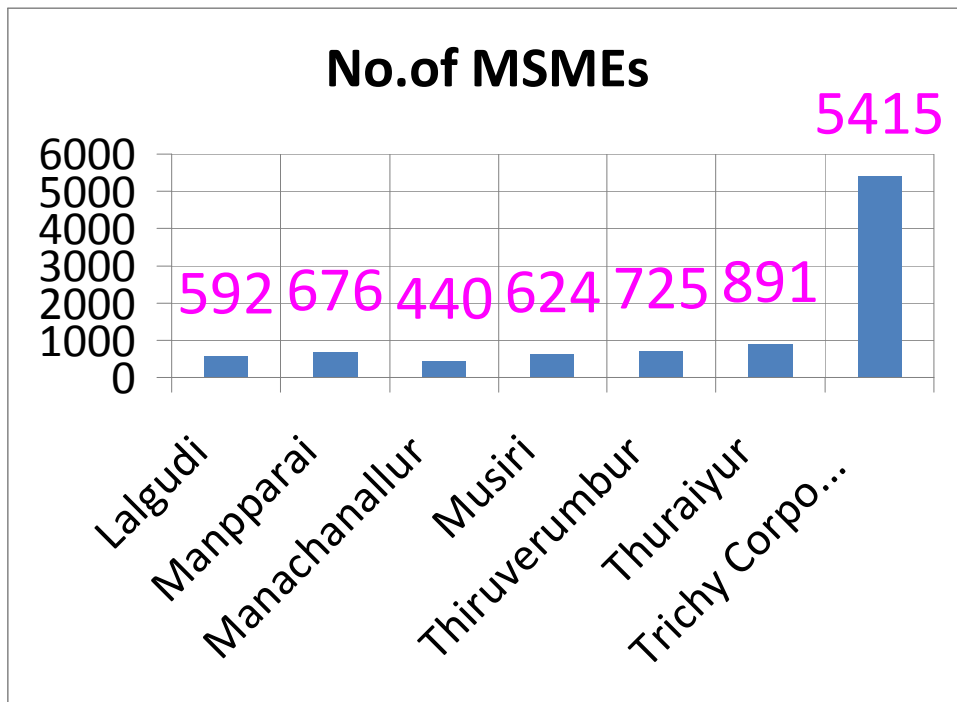
### ELECTRIACL & ELECTRONICS INDUSTRIAL ESTATE

Date of Commencement of Estate	: 04.06.1976
Total Area acquired	: 21.02 Acres
No. of Plots apportioned	: 76
Hire Purchase Sheds	
Total No. Of sheds	: 8
No. of hire purchase shed	: 8
No. of sheds allotted	: 8
No. of sheds functioning	: 8
Developed plots	
Total No. of Plots	: 68
No. of sheds allotted	: 68
No. of sheds functioning	: 64
No. of plots under construction	: 2

## SIDCO ESTATES

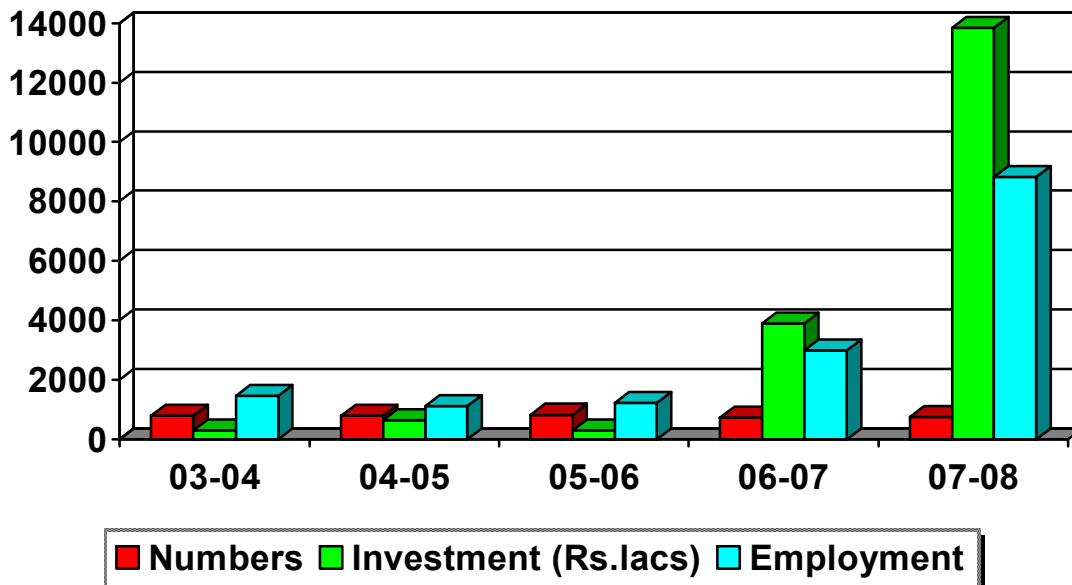
Name of the Estate	Extent (Acres)	Developed		Allotted	
		Plot	Shed	Plot	Shed
Ariyamangalam	17.64	-	33	-	33
Thuvakudi	478.84	378	25	378	25
Thiruverumbur	74.54	36	36	36	36
Thuvakudi (WCR)	14.24	147	-	46	-
Vazhavanthankottai- WIP	86.00	200	-	200	-
Vazhavanthankottai- Phase II	56.00	40	-	40	-
Vazhavanthankottai- Phase III	38.00	72	92 appns recd. Infra development undergoing		
Kumbakudi	87.50	-	Infra development undergoing		

## BLOCKWISE DISTRIBUTION OF MSMEs



## PROJECTED GROWTH OF MSMEs

### GROWTH OF MSMEs IN PAST 5 YEARS



- BHEL alone is expected to grow at the rate of 50% PA in the next two years by increasing its income from Rs. 5000 Crores to Rs. 7500 Crores.
- Around 350 ancillary industries in and around Tiruchi is expected to provide a total direct employment of 18000 in the next few years.
- The capacity of these units is expected to get doubled from 350000 MT in the next couple of years.
- Readymade Garments manufacturing is picking up in the district and at present the units set up are having sufficient orders.
- Software development is another area that is gaining momentum in the city.

### STEPS TO BE TAKEN TO INCREASE THE INDUSTRIAL GROWTH

- The infrastructure facilities in the Industrial Estates are to be up graded.
- The underlying potential for banana-based products should be tapped. Suitable motivation & awareness campaigns are to be conducted to attract entrepreneurs.
- The proposed IT Park may be speeded up.
- Lack of direct flights to the western countries is also to be looked up.

- The basic problem faced by the fabrication industries is the dearth of skilled manpower, which can be overcome by imparting skill training to the semi skilled and unskilled workers.
- DIC should be sufficiently equipped with to provide counseling and guidance to entrepreneurs with modern gadgets.

## TREC – STEP

Part of the national initiative to grow knowledge based ventures in society Established in 1986 in the then REC, Trichy campus with a focus on Promotion of knowledge based Industries Development and Transfer of Technologies Training in Technology and Business Skills New Developmental Project Initiatives

### Facilities



### Technology Incubator

