

## DISTRICT PROFILE - TIRUNELVELI

### TIRUNELVELI DISTRICT PROFILE

- Tirunelveli - about 2000 years old town of old tradition is the head quarters of Tirunelveli District.
- Situated on the banks of the river Thamiraparani.
- 650 Kms away from chennai.
- On the way to Kanyakumari from Madurai.
- “Oxford of South India” consisting of twin cities Tirunelveli & Palayamkottai
- Famous for Courtallum Waterfalls and Tirunelveli Halwa.

Area - 6823 Sq. Kms

District Boundaries

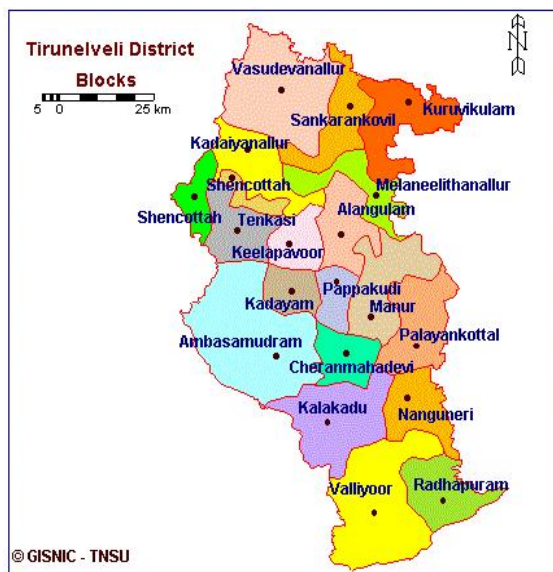
North - Virudhunagar District

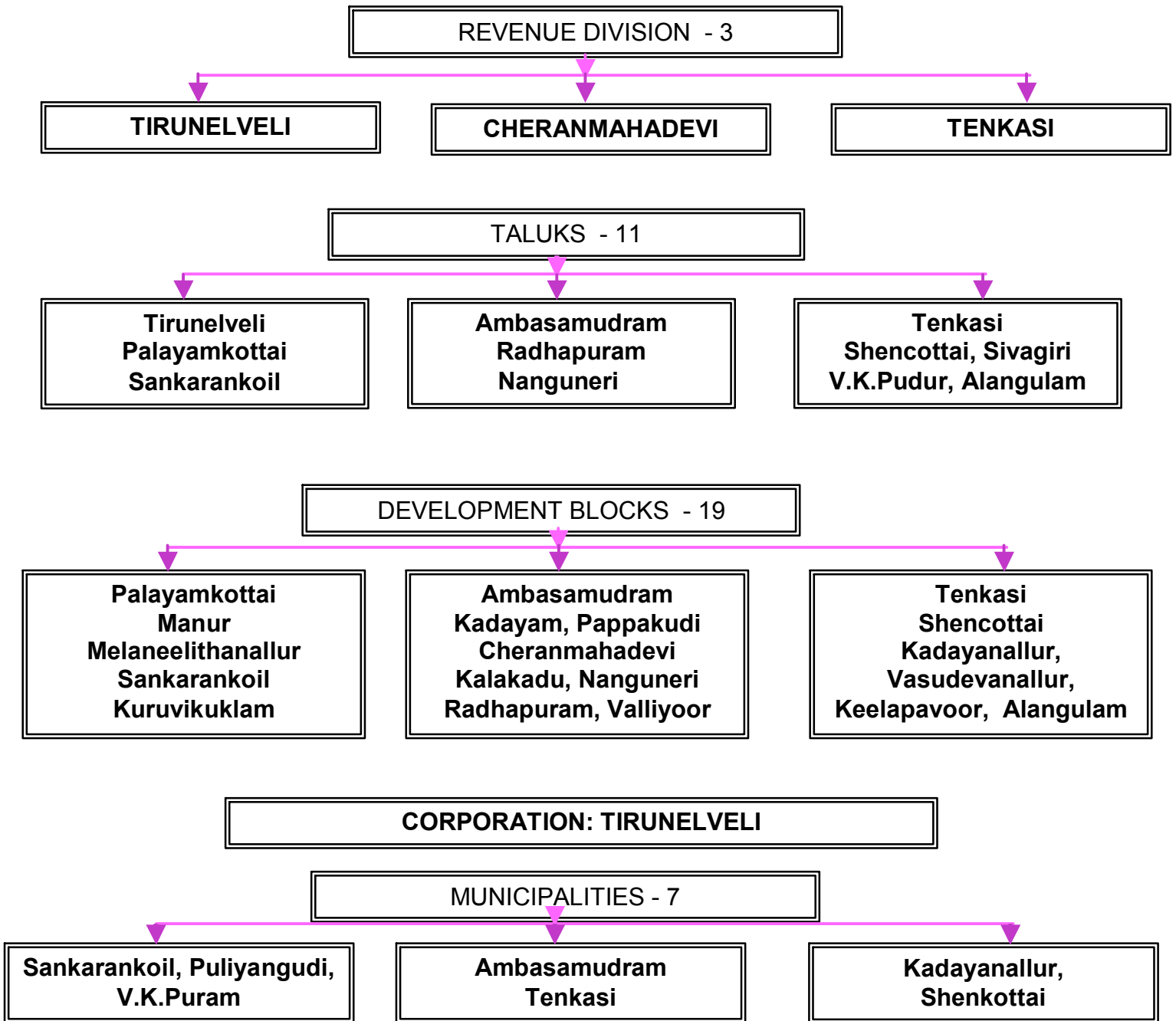
South - Kanyakumari District

East - Thoothukudi District

West - Western Ghats.

### DISTRICT MAP





## OVERVIEW OF THE INDUSTRIAL SCENARIO

- ❖ Limestone is the major mineral available in Rastha, Thalaiyoothu, Sankarnagar & Padmaneri.
- ❖ Limestone available here contains calcium oxide (CaO) from 34.57% to 55.49 %, Magnesium oxide (MgO) from 0.31% to 7.24 %.

- ❖ Lime industries manufacturing raw lime powder, burnt lime and Cem powder numbering about 65 are available in Manur block.
- ❖ Red Garnet sands and ilmenite are available in the river beds of Nambiyar, as well as in
- ❖ Seashore lands of Radhapuram Taluk.
- ❖ Garnet sand & Abrasives, are separated and exported.
- ❖ There are 25 numbers of medium and major industries functioning.
- ❖ Major products are Cement, Cotton yarn, Sugar, Cotton seed oil, Printing paper and Flour products.

### **COTTAGE AND HANDICRAFT INDUSTRY**

- ❖ Handloom, Mat weaving, Basket making, Palmirah products, Poultry.
- ❖ Country bricks, Tiles making, Blacksmithing, Carpentry
- ❖ Metal and allied works, Terracota products.
- ❖ Lacquerware and Wet Grinding Stone.

### **INFRASTRUCTURE**

- ❖ Electric power is sufficiently available
- ❖ Thamirabarani, a perennial river is the main source of water
- ❖ Well connected by roads and rails
- ❖ Thoothukudi port is just 50 kms away from Tirunelveli.
- ❖ Air port is situated 30 km away from Tirunelveli
- ❖ Thoothukudi is being connected by 4 way lane.
- ❖ Due to the literacy ratio of 77 % sufficient educated manpower is sufficiently available.

### **POWER SCENARIO**

#### **KUDANKULAM ATOMIC POWER PROJECT 1 & 2**

- ❖ Location : Kudankulam, Tirunelveli District
- ❖ Capacity : 2 x 1000 MW

## WIND TURBINES

- ❖ Nos : 3622
- ❖ Installed capacity : 1555 MW

## HYDRO ELECTRIC POWER PLANTS

- ❖ Installed capacity : 233 MW

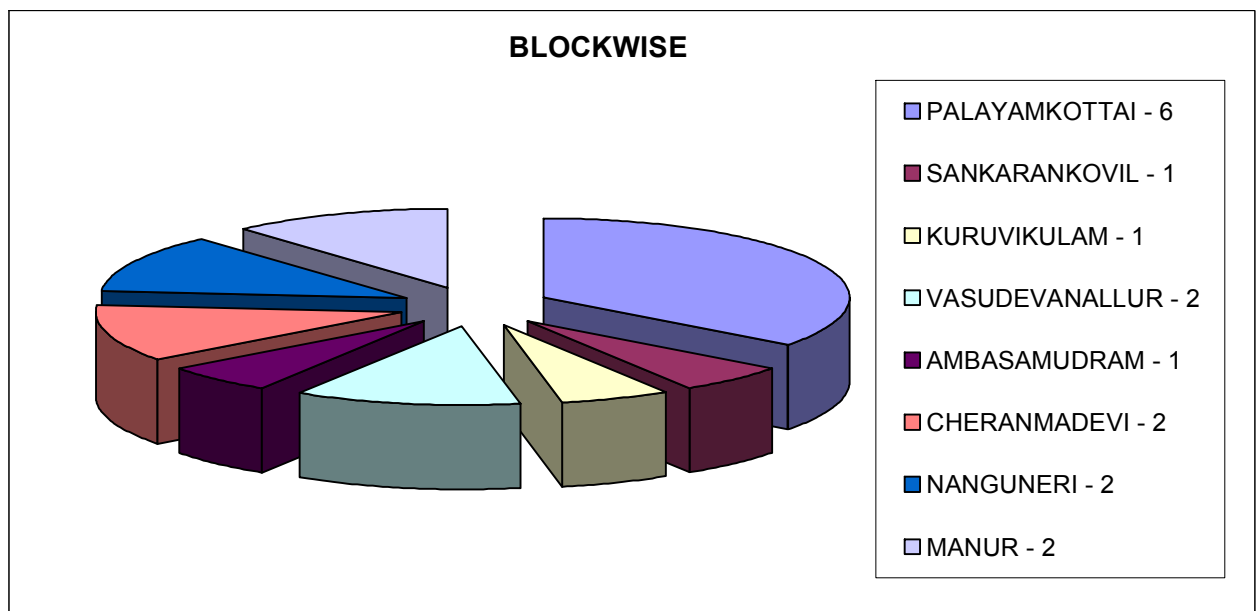
## **LARGE AND MEDIUM SCALE INDUSTRIES**

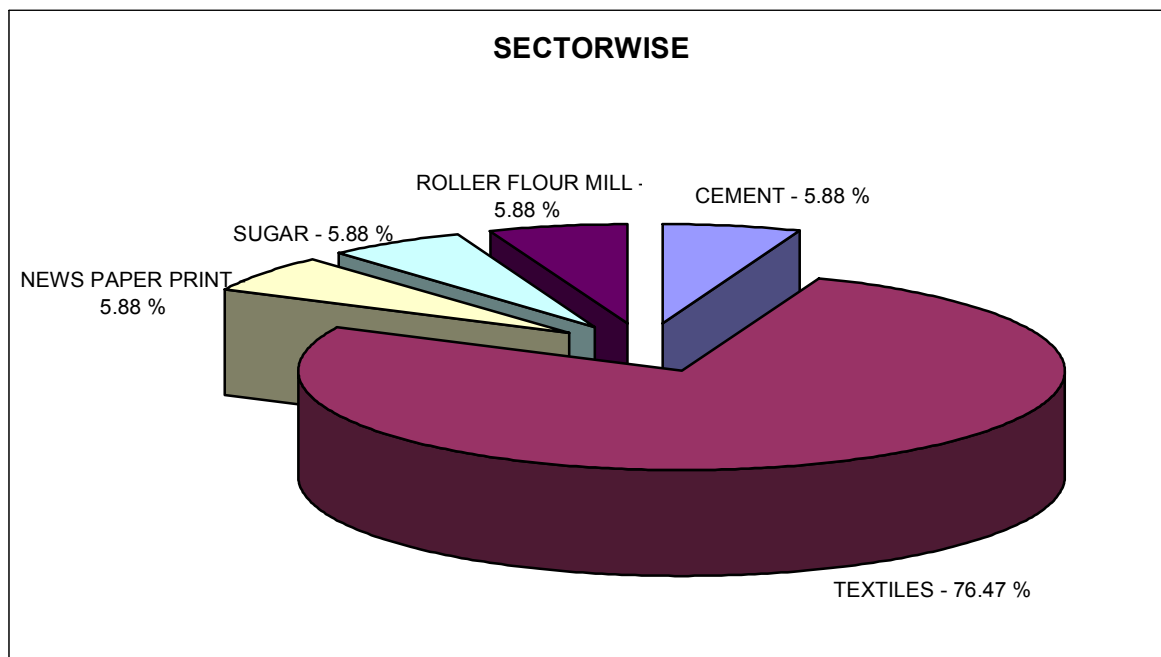
<b>S. NO</b>	<b>Name and Address</b>	<b>Block</b>	<b>Product</b>	<b>Investment in Machinery (Rs in lakhs)</b>	<b>Employment</b>	<b>Production Capacity</b>
01	The India Cements Sankarnagar, Tirunelveli	Palayamkottai	Cement	15240.66	1409	10,00,000 MT
02	Tamilnadu Jai Bharath Mills Ltd Malayankulam Village Chidambarapuram, Sankarankoil	Kuruvikulam	Cotton yarn	2745.49	562	33500 MT
03	Sun Paper Mills Ltd P.B. No.2, Mukkudal, Cheranmahadevi	Cheranmadevi	News Paper print	2532.05	671	22000 TONS
04	Syed Cotton Mills Ltd 4G, II Floor, Salai St, Sindhupoondurai, Tirunelveli	Nanguneri	Cotton Yarn	262.56	211	1500 MT
05	Sundaram Textiles Ltd Nambinagar, Nanguneri Post	Nanguneri	Cotton Yarn	112.7	529	2500 MT
06	Sivakumar Spinning Mills (P) Ltd Sankarnagar, Tirunelveli	Palayamkottai	Cotton Yarn	60.00	150	450 MT

<b>S. NO.</b>	<b>Name and Address</b>	<b>Block</b>	<b>Product</b>	<b>Investment in Machinery (Rs in lakhs)</b>	<b>Employment</b>	<b>Production Capacity</b>
07	The Gomathi Mills 6, Shencottai Trunk Road Viravanallur, Tirunelveli	Cheramahadevi	Cotton Yarn	203.03	314	2200MT
08	Subburaj Spinning Mills (P) Ltd Sankarnagar, Tirunelveli	Palayamkottai	Cotton Yarn	884.62	231	2700 MT
09	Sri Ganapathy Mills Company Ltd Sankarnagar, Tirunelveli	Palayamkottai	Cotton Yarn	1591.34	520	4955 MT
10	Kovilpatti Lakshmi Roller Flour Mills Ltd, 75/8 Benares cape Road, Gangaikondan,	Manur	Wheat Flour	2409.75	560	42000 MT
11	Dharani Sugars and Chemicals Ltd Dharaninagar, Athuvazhi,	Vasudevanallur	Sugar	1392.89	323	43200 MT
12	Sankar Spinning Mills (P) Ltd 210 Madurai Road Sankarnagar, Tirunelveli	Palayamkottai	Cotton Yarn	44.81	151	650 MT

S. NO.	Name and Address	Block	Product	Investment in Machinery (Rs in lakhs)	Employment	Production Capacity
13	Madura Coats Ltd Papanasam Mills Post Ambasamudram	Ambasamudram	Cotton Yarn	3366.00	3716	8583.8 TONS 329 LACK
14	Natural Cotton Spinning Mills (P) Ltd Pettai, Tenkasi Road, Tirunelveli	Palayamkottai	Cotton Yarn	1000	450	22000 MT
15	KLRF Textiles 75/8 Benares cape Road, Gangaikondan, Tirunelveli	Manur	Cotton Yarn	87	345	24000 MT
16	Arumuga Textile Exporters Puliangudi, Tirunelveli	Vasudevanallur	Weaving of gauze cloth for bandage	126.33	150	6000000MTS
17	Geethanjaly Mills Ltd, Post box – 6 Sankarankoil 627 756	Sankarankoil	Cotton Yarn	423.00	292	31000MT

### BLOCKWISE AND SECTOR WISE ANALYSIS






**PROPOSED LARGE SCALE PROJECTS IN TIRUNELVELI DISTRICT**

Sl. No	Name of the unit	Line of Activity	Proposed value of Plant and Machinery (Rs in Crores)
1	M/s. N.M.Tyres SIPCOT Industrial Growth centre, Gangaikondan	Manufacturing Tyres and Tubes	315
2	M/s.Season Infrastructure (P)ltd. Ambasamudram	Clay Brick Manufacturing ( Fully Automatic)	12
3	M/s. Hira Industries Ltd., Kulayaneri, Tenkasi	Generation of Electrical Energy	28.6
4	M/s. R.R.Ispat Ltd. Kulayaneri, Tenkasi	Generation of Electrical Energy	28.6
5	M/s. Madura Coats (P)Ltd, Ambasamudram	Manufactuirng of Synthetic filament yarn	57.8
6	M/s. Sundaram Textiles Nanguneri	Cotton Yarn	43.63

## PROPOSED INDUSTRIAL CLUSTER SCHEMES OF TIRUNELVELI DISTRICT

### LIME INDUSTRIES CLUSTER

PARTICULARS	Amount ( Rs in Lakhs )	
TOTAL PROJECT	457.4	
CONTRIBUTION BY BENEFICIARY /	132.11	
GOVT .OF INDIA AID UNDER SICDP	325.3	
STATE GOVT.AID FXPFCTFD	Nil	
LOANS FROM	Nil	
PROPOSED CFC	a. Lime Stone Mining b. Vertical Shaft Kiln ( VSK ) c. Quality Control & Testing Lab d. Training Centre	
NAME OF SPV	Tirunelveli District Lime Manufacturers Welfare Association	
OTHER STAKE	TIFAC . CECRI. NCB.DIC. TNPCB. ITCOT.MSMEDI AND BANKS	
GEOGRAPHICAL LOCATION	Sankarnagar , Manur and Alangulam	
PRESENT STAGE	Proposal sent to Government of India after diagnostic study conducted by ITCOT	

**BRICKS CLUSTER**

<b>PARTICULARS</b>	<b>Amount ( Rs in Lakhs )</b>
TOTAL PROJECT COST	162.62
CONTRIBUTION BY BENEFICIARY / SPV	36.62
GOVT .OF INDIA AID UNDER SICDP	112.00
STATE GOVT.AID EXPECTED	14.00
LOANS FROM BANKS	Nil
PROPOSED CFC	a. Moulding Machine b. Vertical Shaft Kiln ( VSK ) c. Training Centre
NAME OF SPV	Tirunelveli District Lime Manufacturers Welfare Association
OTHER STAKE HOLDERS	TERI , AEI, DIC, TNPCB, ITCOT,MSMEDI AND BANKS
GEOGRAPHICAL LOCATION	Puliyangudi , Vasudevanallur , Sivagiri
PRESENT STAGE	Proposal sent to Government of India after diagnostic study conducted by ITCOT

## **RICE MILL CLUSTER**

- ❖ The feasibility study for setting up Rice Mill Cluster in Alangulam Block is being carried out by NI-MSME, Hyderabad.
- ❖ This cluster is spreading from Keelapavoor to Alangulam blocks.
- ❖ The number of units functioning in this cluster is about 95.



## **OTHER POSSIBLE CLUSTERS**

### **COCONUT FIBRE INDUSTRY**

- ❖ Situated in Tenkasi and Shencottai blocks.
- ❖ The abundant availability of the coconut husk facilitate the flourishing of this kind of cluster.
- ❖ Coconut fibre conversion, making curled coir rope, twisting into coir yarn are the activities involved.
- ❖ Coir pith – a waste material from coir industry has been now converted into coir pith blocks a foreign exchange earner.
- ❖ About 50 units are functioning.

## **PATHAMADAI KORAI MAT INDUSTRY**

- ❖ Traditional industry in Cheranmahadevi block.
- ❖ About 70 families are engaged in this cluster.
- ❖ Has International recognition for their silk mat.



## **POWERLOOM**

- ❖ Existing in Sankarankoil and Vasudevanallur Blocks.
- ❖ About 300 families are engaged in this cluster.
- ❖ Sarees, Lungies and kada cloth are the main products presently woven.

## **SAW MILL**

- ❖ Existing in Shencottai and Tenkasi blocks.
- ❖ Units numbering about 75.
- ❖ Imported logs are the primary raw material.
- ❖ Now raw material crunch due to non-availability and cost escalation are the bottlenecks.



## **READYMADE GARMENTS**

- ❖ The location is Mangudi in Sankarankoil Taluk.
- ❖ Manufacturing Readymade Garments
- ❖ About 50 units are working on Job work basis.

The other small clusters in cottage and handicrafts sector are the manufacture of Appalam in Kallidaikurichi, Lacquer ware, Brass metal products in Ambasamudram block, Wet Grinding stone in Vasudevanallur block and Tiles manufacturing in Valliyoor block.

## EXPORT POTENTIALS OF TIRUNELVELI DISTRICT

- ❖ Coir pith block/ Coir Products
- ❖ Processed Gherkins
- ❖ Cashew products
- ❖ Korai Mat
- ❖ Readymade Garments
- ❖ Terry Towels and Lungies
- ❖ Herbal Products
  - Ornamental Wooden Products

## POTENTIAL NON-FARM SECTOR TYPE OF INDUSTRIES IN TIRUNELVELI DISTRICT

Category	Type of Industries
Raw material based	Agro Processing activities, Horticulture based activities, Cotton textiles, Dairy and wood based
Demand based	Sari weaving, Tourism related, Readymade garments, Milk Chilling and processing etc.,
Skill based	Cotton & Silk weaving, Lacquerware, Brass items, Brick making etc.,
Export oriented	Herbal products and fruit processing & fresh organic fruits, Coconut based products
Rural Artisans	Village Industry, Rope making, Imitation Jewellery, Hand made papers etc.,

## SPECIAL ECONOMIC ZONE NANGUNERI

- ❖ A multi product SEZ in Tirunelveli district.
- ❖ Government of India granted formal approval
- ❖ AMR Construction & its associates are the JV partner with TIDCO

- ❖ AMRL International Tech City Ltd, the JV of TIDCO, would implement this project in two phases
- ❖ Project cost for creating infrastructure estimated at Rs.630 Crore
- ❖ Preliminary construction activities would commence by end of 2008
- ❖ Basic infrastructure proposed to be made in place by end of 2008
- ❖ Nearest Sea (Major) Port is Tuticorin @ 82 kms.
- ❖ Nearest Domestic Airport is Tuticorin @50 kms.
- ❖ Nearest International Airports are Thiruvananthapuram & Chennai @ 135 kms & 600 kms respectively



### **SIPCOT INDUSTRIAL GROWTH CENTRE - GANGAIKONDAN**

1. Location	: GangaiKondan Village, Tirunelveli District
2. Total Area of the Complex	: 1994.59 Acres
3. Area Available for allotment to Industrial Plots	: 1543 Acres
4. Area Allotted so far	: 729.57 Acres
5. Industries started production	: 7 Nos.

6.Products manufactured : Calcite powder, Textiles, Burnt lime,  
Industrial Oxygen and Bottling unit

7. Area allotted for ELCOT for setting up  
IT Park : 400 Acres



## **INDUSTRIAL ESTATES**

### **SIDCO INDUSTRIAL ESTATE, PETTAI**

- ❖ Pettai Industrial Estate is having 54 sheds, 10 Tiny sheds and 18 developed plots occupied fully
- ❖ Pressure cooker utensils, Coir mattress
- ❖ Foundries, Engineering works shop
- ❖ Corrugated boxes, PVC, Plastic products

- ❖ Strapping

**SIDCO INDUSTRIAL ESTATE, KADAYANALLUR**

- ❖ Have 10 sheds & 12 plots. Except 5 developed plots all sheds and plots have been occupied.
- ❖ Wooden furniture & Curled coir are the major products

**SIDCO INDUSTRIAL ESTATE, VALLIYOOR**

- ❖ Have 54 developed plots out of which 50 nos have been filled.

**BLOCK WISE DETAILS OF PERMANENTLY REGISTERED / ENTREPRENEUR MEMORANDUM FILED ENTERPRISES IN RESPECT OF DISTRICT INDUSTRIES CENTRE – TIRUNELVELI AS ON 31.07.2008.**

		Details of Enterprises in each block			
S.no	Name of the block	Total No.pf PMT / Final MSMEs Units registered from inception up to 31.07.3008	Land & Building (Rs.in Lakhs)	Plant & Machinery (Rs.in Lakhs)	Employment Generated
1	Ambasamudram	1010	631.49	490.00	5599
2	Alangulam	533	407.00	330.00	1880
3	Cheranmadevi	311	243.80	200.00	1410
4	Kalakad	302	242.90	300	1195
5	Kuruvikulam	699	196.00	520.00	4260
6	Keelapavoor	848	206.18	987.00	3740
7	Kadayam	332	466.55	160.00	1860
8	Kadayanallur	541	244.00	390	2275
9	Meelaneelitha Nallur	319	1694.77	210.00	1485
10	Manur	2080	228.00	2220.00	8551

		<b>Details of Enterprises in each block</b>			
<b>S. No</b>	<b>Name of the block</b>	<b>Total No.pf PMT / Final MSMEs Units registered from inception up to 31.07.3008</b>	<b>Land &amp; Building (Rs.in Lakhs)</b>	<b>Plant &amp; Machinery (Rs.in Lakhs)</b>	<b>Employment Generated</b>
11	Nanguneri	475	220.00	313.00	1745
12	Pappakudi	363	3220.00	200.00	2485
13	Palayamkottai	3114	764.00	1268.00	17409
14	Radhapuram	573	446.83	590	2126
15	Shencottai	1160	909.05	720.00	6416
16	Sankarankovil	1207	1712.48	823.00	6550
17	Tenkasi	986	1050.24	880.00	4126
18	Vasudevanallur	943	594.34	410.00	2899
19	Valliyoor	876	926.00	1430.00	2555
<b>TOTAL</b>		<b>16672</b>	<b>14403.63</b>	<b>12441</b>	<b>78566</b>

### **OVERALL SCENARIO AFTER 5 YEARS**

- ❖ Tirunelveli the expected fast developing “ Information Technology Hub of the South “ would bring more employment opportunities and related Industrial activities.
- ❖ The proposed IT Park at Gangaikondan and High Tech park at Nanguneri would bring about change in the Industrial Climate and further opportunities under this sector.
- ❖ The District has been identified as one of the six districts under Agri Export Zone for Mango. More number of Agro based and Food processing Industries would come up once AEZ is set up.
- ❖ The incentives announced in the New MSME Policy 2008 would encourage the potential entrepreneurs to set up new ventures in the

Industrially backward blocks of this District viz Alangulam, Kadayam, Pappakudi, Kuruvikulam, Meelaneelithanallur, Nanguneri and Radhapuram and other areas.

### **SUGGESTIVE POINTS TO INCREASE THE INDUSTRIAL GROWTH**

- ❖ The banks may assess the working capital requirement of the units liberally. Timely sanction of the adequate working capital limits to the MSMEs is essential for their financial health.
- ❖ Banks may grant working capital loans to Handloom and Power loom units, Artisans, Self employed persons etc, under a flexible system.
- ❖ Exposure visits to the intending entrepreneurs, workshops for Micro, village and Village Small enterprises to meet out the dynamic market requirements may be organised.
- ❖ Services of consultants and specialists in market research and market information analysis are to be made available in this District for further growth.
- ❖ Entrepreneurial interest of the first generation aspiring industrialist is to be kindled through RGUMY.