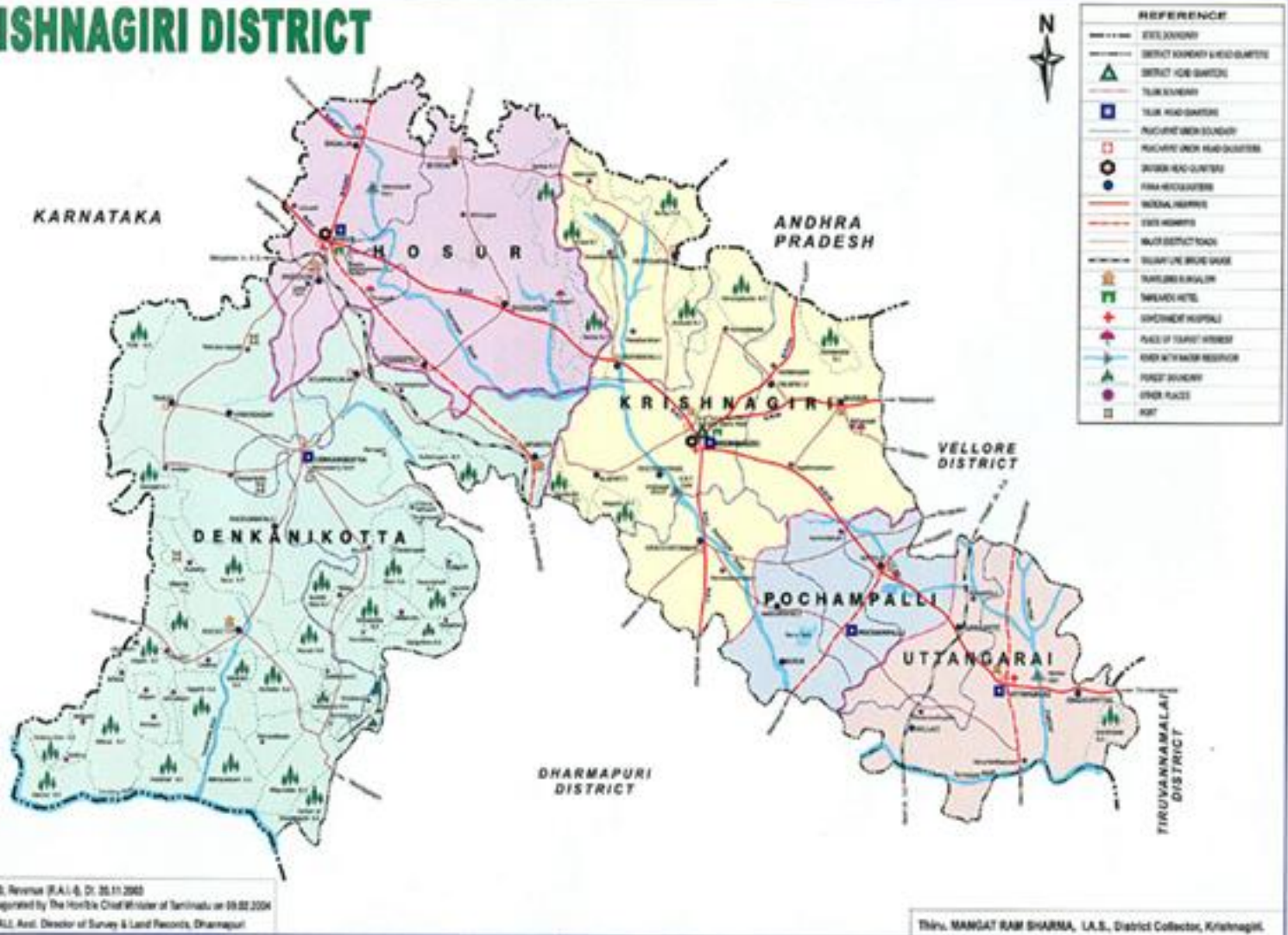


DISTRICT PROFILE – KRISHNAGIRI

KRISHNAGIRI DISTRICT



DISTRICT PROFILE

ADMINISTRATIVE DIVISIONS

➤ REVENUE DIVISIONS

- Krishnagiri
- Hosur

➤ REVENUE TALUKS

- Krishnagiri
- Hosur
- Pochampalli
- Uthangarai
- Denkanikottai

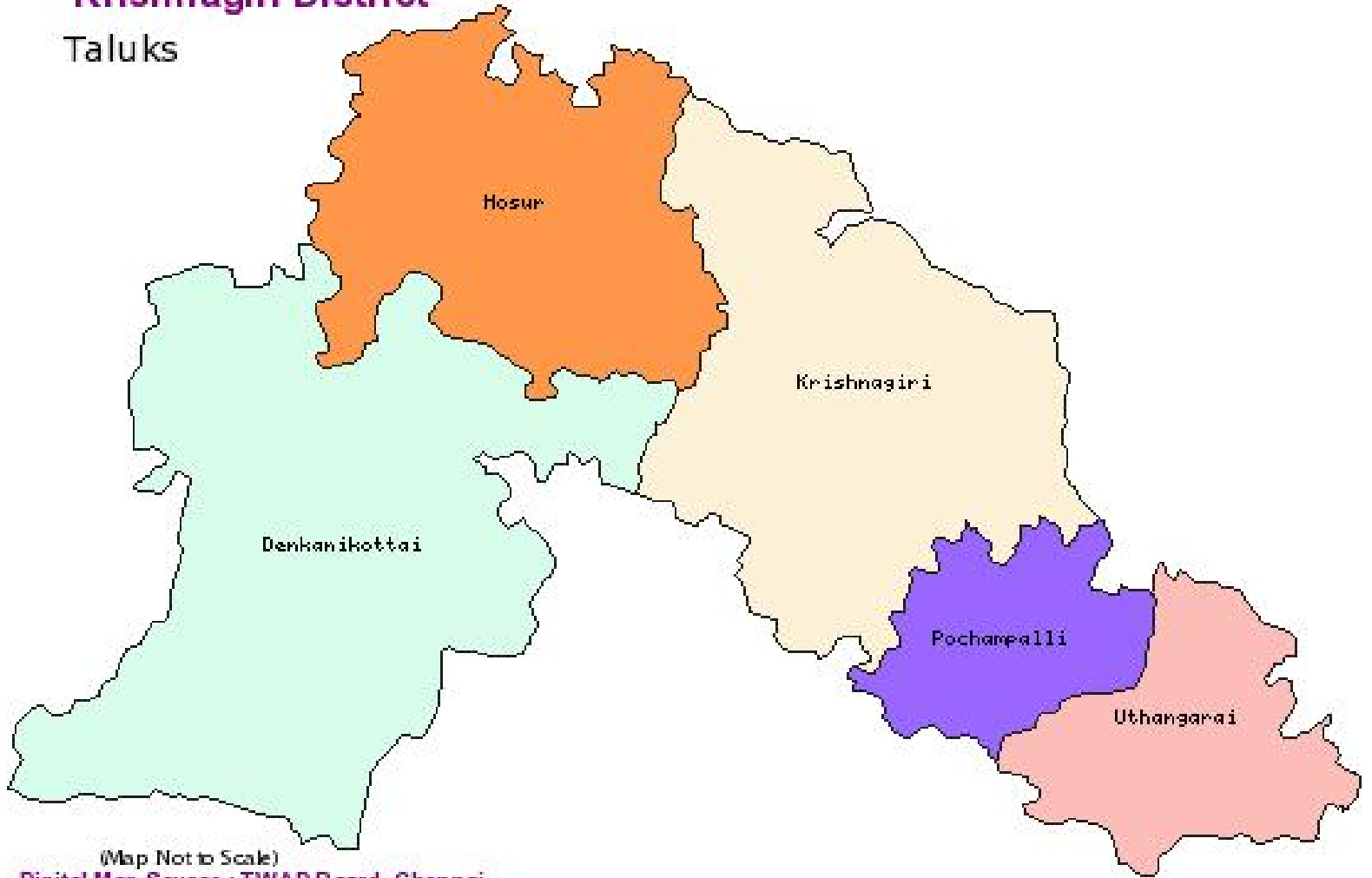
➤ PANCHAYAT UNIONS

- Kelamangalam
- Thali
- Krishnagiri
- Shoolagiri
- Vepanapalli
- Hosur
- Kaveripattinam
- Bargur
- Mathur
- Uthangarai

Krishnagiri District has 2 Municipalities, 10 Panchayat Unions, 7 Town Panchayats, 352 Village Panchayats and 636 Revenue Villages.

Krishnagiri District

Taluks



(Map Not to Scale)

Digital Map Source : TWAD Board, Chennai

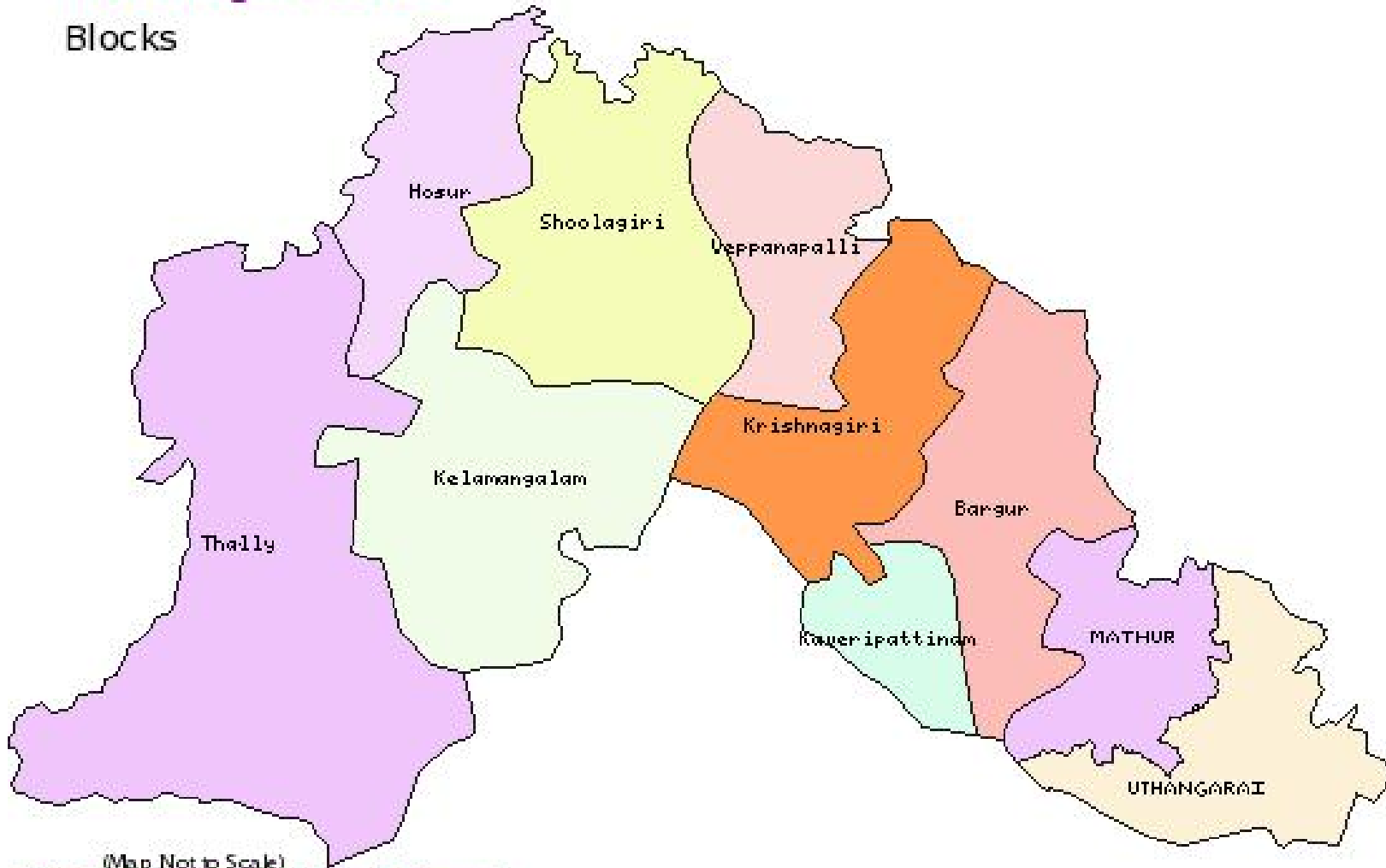
Web Design : NIC, TNSC

Taluk wise Villages

Number of Taluks	5
Number of Revenue Villages	636
Taluk	Revenue Villages
Denkanikottai	93
Hosur	176
Krishnagiri	142
Pochampalli	40
Uthangarai	185

Krishnagiri District

Blocks



(Map Not to Scale)

Digital Map Source : TWAD Board, Chennai

Web Design : NIC, TNSC

Block wise Panchayats

Block	Panchayat Villages	Block	Panchayat Villages
Bargur	36	Hosur	30
Kaveripattinam	36	Kelamangalam	28
Krishnagiri	30	Mathur	24
Shoolagiri	42	Thally	50
Uttangarai	34	Veppanapalli	27

HR Status

Total Population	15,46,700
Urban Population	2,53,989
Rural Population	12,92,711
Density of Population per Sq. Km.	301
Sex Ratio	944/1,000
Literacy rate	58.11%

This district has a network of 5 National Highways converging.

- NH-7 (Kanyakumari-Kashmir)
- NH-46 (Chennai-Bangalore)
- NH-66 (Pondicherry-Bangalore)
- NH-207 (Sarjapur-Bagalur-Hosur)
- NH-219 (Krishnagiri-Kuppam)

Agriculture:

Paddy	20,687 hectares
Ragi	48,944 hectares
Other minor crops	11,937 hectares
Pulses	48,749 hectares
Sugarcane	4,078 hectares
Mango	30,017 hectares
Coconut	13,192 hectares
Tamarind	1,362 hectares
other crops	43,199 hectares

Horticulture:

Horticulture crops	38,248 hectares
Fruits	32,162 hectares
Vegetables	9,773 hectares
Spices	4,398 hectares
Flowers	1,115 hectares

Sericulture: 5069 acres of land is under mulberry cultivation.

Natural Resources:

- 2,024 Sq.Kms of forest cover (About 40% of total area)

Flora & Fauna :

- Elephants, Sambar, Spotted Deer, Gaur, Wild boar, Panther etc. Denkanikottai Taluk constitutes the Cauvery elephant reserve.
- Big lakes in Anchetti and Hosur areas attracts migratory birds like Painted storks, Teals etc.

- The flora includes variety of timber trees like Rose wood, Teak, Sandal etc.
- Pungam oil from abundant Pungam Trees
- This district is also famous for its fleshy and tasty Tamarind, especially in the name of 'Urigam' variety.

Minerals :

- "Paradise" is the most popular multi coloured granite
- Black granite is available in Hosur and Denkanikottai.
- Paradise slabs exported to America, England, Australia and other EU
- Quartz stones from Denkanikottai &
- Limestones from Uthangarai are mined.

Overview of the Industrial Scenario :

2	Mfg. of Tobacco products	1	6.81	9
4	Mfg. of wearing apparels	2936	3386.33	4370
6	Mfg. of Chemical products	285	2065.13	1396
8	Mfg. of Non metallic products	135	2795.09	1542
10	Mfg. of Electrical Apparatus	114	5788.06	1927
12	Rep & Ser of Automobiles	2115	2233.44	2656
14	DTP	142	140.61	350

BLOCKWISE DETAILS OF LARGE SCALE INDUSTRIES :

Block	No.of Units
Barugur	0
Hosur	Agro based 1 Auto Components 12 Castings 1 Engineering Industry 2 Pharmaceuticals 4 Textiles 3 Tobacco products 1 Granites 1 Household articles 2 Paints 1 Leather products 1 Cutting tools 3 Electronic items 6 Total 38
Kaverippattinam	0
Kelamangalam	0
Krishnagiri	0

Mathur	Power plant	1
Shoolagiri	Cut flowers	1
	Granites	3
	Chemicals	1
	Auto components	2
	Total	7
Thally	Aeronautical	1
	Autocomponents	2
	Total	3
Uthangarai	Spinning mills	2
	Milk products	3
	Total	5
Veppanappalli		0
Total		54

Proposed Large scale projects :

- @ Alappatti by KRISHMAA.
- An aseptic plant with a outlay of Rs.13.55 crores.
- Ready to Serve Juice plant with a outlay of Rs.13.89 crores.

Industrial clusters :

- ITCOT proposal for a Mango Cluster of Rs.5 crores under consideration of GOI under SICDP
- Rs.10 lakhs sanctioned for soft intervention.
- Auto Components cluster at Hosur to be mooted with MSME Institute.
- Potential small rural clusters - Milk products, Match Industries, Savouries, etc., can be promoted.

Export potential :

- Cut Flowers
- Granite Slabs & Monuments
- Fruit pulp
- Matches
- Automobile components
- Ready made Garments
- Coir products
- Electrical and Electronic products

Other potential non-farm sector :

- Raw material based :
 - Granite Slabs and Monuments
 - Fruit pulp
 - Coir Products
 - Sericulture
 - Floriculture
 - Milk products
- Demand Based :
 - Auto Ancillaries in Hosur
 - Low cost construction materials
 - Tamarind paste
 - Paper cups and plates

- Skill Based :
 - Rural Call centres
 - Savories in Kaverippattinam Block
 - Power loom

- Export Oriented :
 - Granite Slabs and Monuments
 - Mango pulp
 - Floriculture

- Rural artisans based
 - Honey collection
 - Savories
 - Soft toys
 - Palm products
 - Broomsticks
 - Coconut leaf knitting

SEZ / Industrial Estates :

- HOSUR MULTI PRODUCT SEZ
 - GMR Infrastructure is to set up a 3,300-acre multi-product SEZ
 - MOU signed with TIDCO in August 2007
 - Initial investment of Rs 2,300 crore in basic infrastructure
 - Investments of over Rs 11,000 crore
 - Generate over 3 lakh jobs.
 - The project would go on-stream in 2009.

- ELCOT IT SEZ
 - ELCOT to establish IT SEZ @ Hosur
 - Honorable Chief Minister has laid foundation stone on 26-02-08

INDUSTRIAL ESTATES:

SIPCOT Hosur (2 Phases) SAMALPATTI (Pochampalli Taluk)	268 Plots 1400 Acres	-
SIDCO Bargur	118 ”	20 Sheds
Hosur	136 ”	160 ”
Krishnagiri	20 ”	65 ”
Uthangarai	90 ”	5 ”
Electrical & Electronic Estate Hosur.	32 ”	12 ”

Proposed:

SIPCOT Phase III & IV at Hosur.

SIDCO Estates at Polupalli, Bargur Unit II, Hosur.

BLOCKWISE MSMEs :

Name of the Block	No. of Units Registered	Total Investment (Rs. In Lakhs)	Emp Generated
Barugur	659	4762.56	3152
Hosur	3693	23812.80	15761
Kaverippattinam	562	4762.56	3152
Kelamangalam	480	3571.92	2364
Krishnagiri	2005	13692.36	9063
Mathur	197	1200.68	788
Shoolagiri	201	1180.64	788
Thally	236	1811.02	1182
Uthangarai	382	2976.60	1970
Veppanappalli	210	1760.90	1182
Total	8625	59532.04	39402

PROJECTED MSME GROWTH

Year	Units	Installed Capacity Rs.In Lakhs)	Total Investment	Employment
2007-08	628	28338.51	20342.47	8013
2008-09	753	33979.13	24391.52	9607
2009-10	903	40747.88	29250.38	11520
2010-11	1083	48870.38	35081.02	13816
2011-12	1299	58617.38	42077.78	16571
Total	4666	210553.28	151143.17	59527

SCENARIO AFTER 5 YEARS:

Year	No. of Units	Installed Capacity (Rs. In Lakhs)	Total Investment (Rs. In Lakhs)	Emp
2011-12	4666	210553.28	151143.17	59527

ESSENTIAL STEPS TO INCREASE THE INDUSTRIAL GROWTH & EXPORT :

- Ranipet- Hosur Industrial Highway corridor
- Jolarpet- Hosur rail link through Krishnagiri
- Public Sector Major Industry to create high rate of employment opportunities and ancillary units.
- Internal Container depot for EOUs
- Common Mobile cold storage unit for Cut Flowers
- Raw Material Go-down for reducing the raw material cost
- Testing Facilities, especially for Automobile components @ Hosur
- Quality testing Lab for Mango pulp @ Krishnagiri